

- c. Your smartphone may be incompatible with the Govee Home app. Try using a different smartphone then reconnect.
- d. Power the strip lights and your smartphone Bluetooth off then on, then try again.
- e. Ensure that your smartphone is within 1m/3.28ft of the strip lights when connecting.
- f. Clear any obstructions that are between the strip lights and your smartphone.

- ③ The strip lights do not display the selected color fully/Some LED beads do not light up.

Please contact the Govee support team for rapid product replacement.

- ④ Cannot sync the strip lights to the beat of my music.
 - a. Move the control box closer to the music source.
 - b. Clean the mic on the control box then try again.
- ⑤ Cannot connect to Wi-Fi.
 - a. Do not skip the Wi-Fi connecting steps in the app.
 - b. 5GHz network is not supported. Please set the router to 2.4GHz and then reset it.
 - c. Connect your phone to Wi-Fi and check whether the network works well.
 - d. Make sure you have entered the correct Wi-Fi name and password.

- e. Change your Wi-Fi password to a brief one. 8 numbers and letters are suggested.
- f. Connect hotspot in your phone to the neon rope lights and check whether the router works with the neon rope lights.

- ⑥ Cannot connect to Alexa.

- a. Pull out every connective part of the neon rope lights and firmly re-connect them.
- b. Re-connect your phone to Wi-Fi.
- c. Plug out the adapter port and re-plug it in.

Customer Service

🛡️ Warranty: 12-Month Limited Warranty

🔍 Support: Lifetime Technical Support

✉️ Email: support@govee.com

🌐 Official Website: www.govee.com

📺 @Govee 📷 @govee_official 📺 @govee.official

🐦 @Goveeofficial 📘 @Govee.smarthome

FCC and ISED Canada Statement

This device complies with Part 15 of the FCC Rules and Industry Canada licence-exempt RSS standard(s). Operation is subject to the following two conditions:

- (1) This device may not cause harmful interference, and
- (2) This device must accept any interference received, including interference that may cause undesired operation.

Warning: Changes or modifications not expressly approved by the party responsible for compliance could void the user's authority to operate the equipment.

Le présent appareil est conforme aux CNR d'Industrie Canada applicables aux appareils radio exempts de licence. L'exploitation est autorisée aux deux conditions suivantes :

- (1) l'appareil ne doit pas produire de brouillage, et
- (2) l'utilisateur de l'appareil doit accepter tout brouillage radioélectrique subi, même si le brouillage est susceptible d'en compromettre le fonctionnement.

NOTE: This equipment has been tested and found to comply with the limits for a Class B digital device, pursuant to Part 15 of the FCC Rules.

These limits are designed to provide reasonable protection against harmful interference in a residential installation. This equipment generates uses and can radiate radio frequency energy and, if not installed and used in accordance with the instructions, may cause harmful interference to radio communications. However, there is no guarantee that interference will not occur in a particular installation. If this equipment does cause harmful interference to radio or television reception, which can be determined by turning the equipment off and on, the user is encouraged to try to correct the interference by one or more of the following measures:

1. Reorient or relocate the receiving antenna.
2. Increase the separation between the equipment and receiver.
3. Connect the equipment into an outlet on a circuit different from that to which the receiver is connected.
4. Consult the dealer or an experienced radio/TV technician for help.

This Class B digital apparatus complies with Canadian ICES-005. Cet appareil numérique de la classe B est conforme à la norme NMB-005 du Canada.

Govee is a trademark of Shenzhen Intellirocks Tech Co.,Ltd. Copyright ©2021 Shenzhen Intellirocks Tech Co.,Ltd. All Rights Reserved.

FCC and IC Radiation Exposure Statement

This equipment complies with FCC and IC radiation exposure limits set forth for an uncontrolled environment. This equipment should be installed and operated with minimum distance 20cm between the radiator & your body.

La distance entre l'utilisation et l'appareil ne doit pas être inférieure à 20 cm.

This device uses a non-replaceable light source. When the light source reaches the end of its life cycle, this device should be replaced. Not intended for illumination. Only used for creating ambiance.

1. Do not connect the rope light to the supply while it is in the packing or wound onto a reel;
2. Do not use the rope light when covered or recessed into a surface;
3. Do not open or cut the rope light;

The Bluetooth® word mark and logos are registered trademarks owned by Bluetooth SIG, Inc. and any use of such marks by Shenzhen Intellirocks Tech. Co., Ltd. is under license.

Responsible party :

Name: GOVEE MOMENTS(US) TRADING LIMITED
Address: 13013 WESTERN AVE STE 5 BLUE ISLAND IL 60406-2448
Email: support@govee.com
Contact information: https://www.govee.com/support

CAUTION:

RISK OF EXPLOSION IF BATTERY IS REPLACED BY AN INCORRECT TYPE. DISPOSE OF USED BATTERIES ACCORDING TO THE INSTRUCTIONS.

ATTENTION :

RISQUE D'EXPLOSION SI LA BATTERIE EST REMPLACÉE PAR UN TYPE INCORRECT. ÉLIMINER LES BATTERIES USÉES CONFORMÉMENT AUX INSTRUCTIONS.



FOR INDOOR USE ONLY
POUR UNE UTILISATION EN INTÉRIEUR UNIQUEMENT



User Manual

Model: H6172

Outdoor RGBIC LED Strip Lights



Govee Home App

For FAQs and more information, please visit: www.govee.com

Safety Instructions

Read and follow all the safety instructions:

- The strip lights and the control box have an IP65 water-resistant rating and can be used outdoors. Keep the adapter and the socket away from water during installation and usage.
- To prevent the strip lights from falling down, ensure they are installed with both the adhesive tape and the clip.
- Be cautious of static electricity during installation and usage. Keep the product away from sharp objects or strong corrosive chemicals.
- When bending the strip lights during installation, avoid folding the LED components as it may affect the product's life span.
- Remove nails, metal, or other conductive objects from the installation surface before attaching the strip lights, as it may cause short-circuiting.
- Do not install the strip lights near any heat sources.
- Do not allow children to install the strip lights alone.
- Avoid installing the strip lights near potentially dangerous sources (e.g., candles, liquid-filled objects).

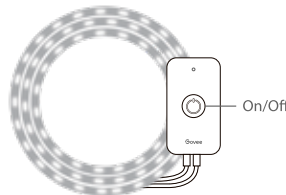
Introduction

Thanks for choosing the Govee outdoor RGBIC strip lights segmented control function for outdoor use. It can be controlled via the Govee Home app and voice. RGBIC is Govee's latest lighting display technology. With an IP65 water-resistant rating, the strip lights can safely bring you a colorful lighting experience.

What You Get

LED Strip Lights	1
Adapter	1
User Manual	1
Service Card	1

At a Glance



02

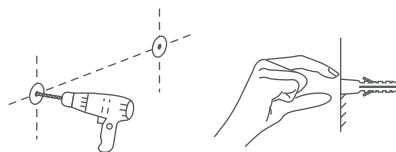
Installing Your Device

Before You Install

- 1 Unpack the box and check all items listed in the packing list.
- 2 Power on the strip lights and check whether it lights up.

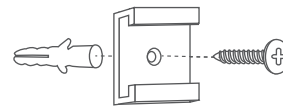
Installing Steps

- 1 Drill a hole in the wall for clip installation. Ensure the plastic anchor can fit in the hole firmly.

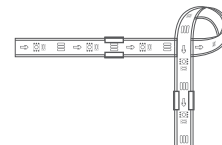


03

- 2 Align the clip with the plastic anchor and attach it to the wall. Insert the screw into the hole and firmly secure it in the plastic anchor.



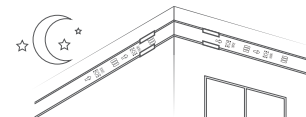
- 3 Wipe the surface of the wall to ensure it is dry and clean. Tear off the film on the 3M adhesive tape and stick the strip lights onto the installing location. Press down on the strip lights repeatedly to ensure it is firmly attached.



- 4 Remove the protective film on the control box to stick it to the chosen location.



- 5 Power on the strip lights and begin using!



04

Pairing Your Device with the Govee Home App

What You Need

- A Wi-Fi router supporting the 2.4GHz and 802.11 b/g/n bands. 5GHz is not supported.
- A smartphone or tablet running iOS or Android.

Pairing Instructions

- 1 Download the Govee Home app from the App Store (iOS devices) or Google Play (Android devices).
- 2 Turn on Bluetooth on your smartphone.
- 3 Open the app, tap the "+" icon in the top right corner and search for "H6172".
- 4 Tap the device icon and follow the on-screen instructions to complete pairing.



05

Controlling the Device with Your Voice

- 1 Open the app, then tap the device icon to enter detail page.
- 2 Tap the setting icon in the top right corner.
- 3 Select Using Guidance and follow on-screen instructions to control the device using your voice.

Specifications

Length	10m/32.8ft
Light Color	RGBIC
Water Resistance	IP65 (The adapter is NOT waterproof.)
Control Method	App, Control Box, Voice Control
Power Supply	Adapter 24V

Troubleshooting

- 1 The adhesive tape is not strong enough.
Use the clips to secure the strip lights firmly during installation.
- 2 Cannot connect to Bluetooth.
 - a. Do not skip Bluetooth connection in the app.
 - b. Ensure Bluetooth on your smartphone has been turned on.

06

01